

SGC XL SMS V1.0.1

TROUBLESHOOTING

Sending SMS from Excel

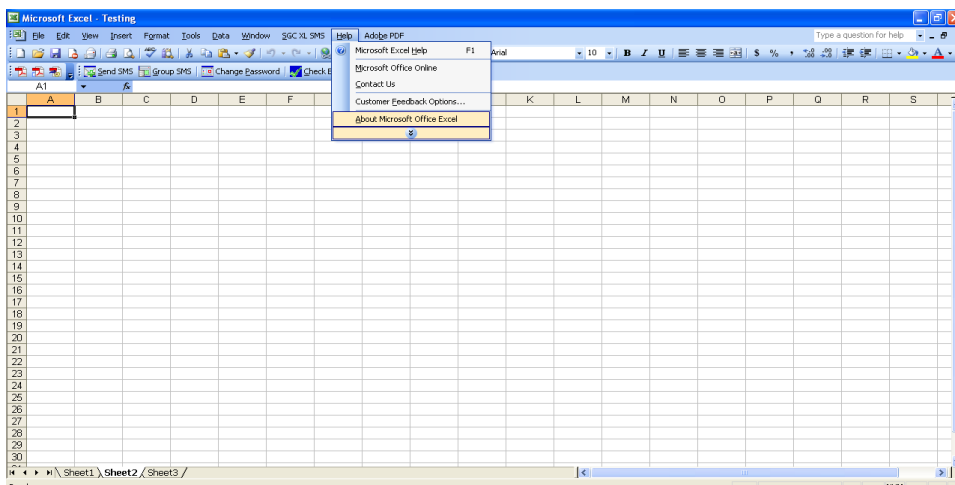
Troubleshooting for Excel SMS Plug-in

1. I cannot use Excel Plug-in, settings page and other functions are not working, what do I do?

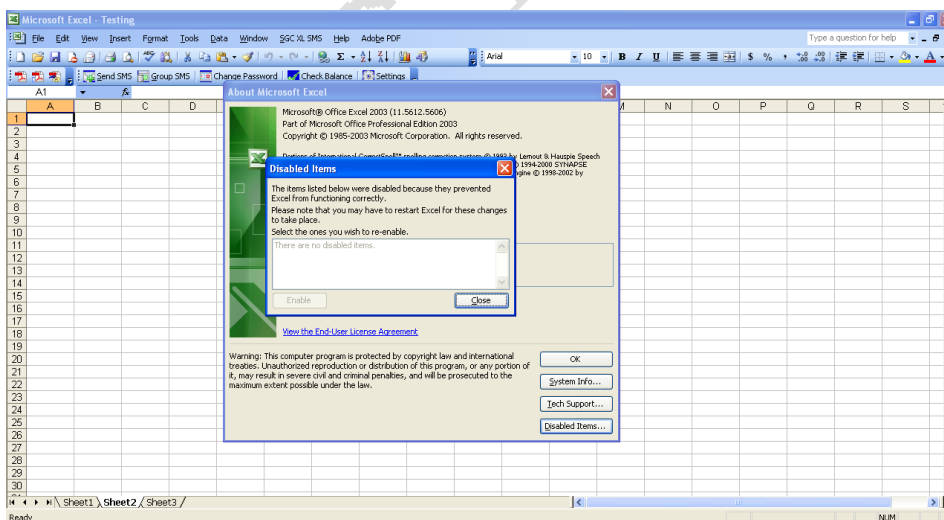
If you do not use the ADD-Ins regularly, Microsoft Excel disables the Add-in so you need to enable it. To learn enabling, follow the instructions.

If you are using Excel 2003, then follow the instructions.

Go to Help, in the drop-down, Click on About Microsoft Excel. A small window appears;

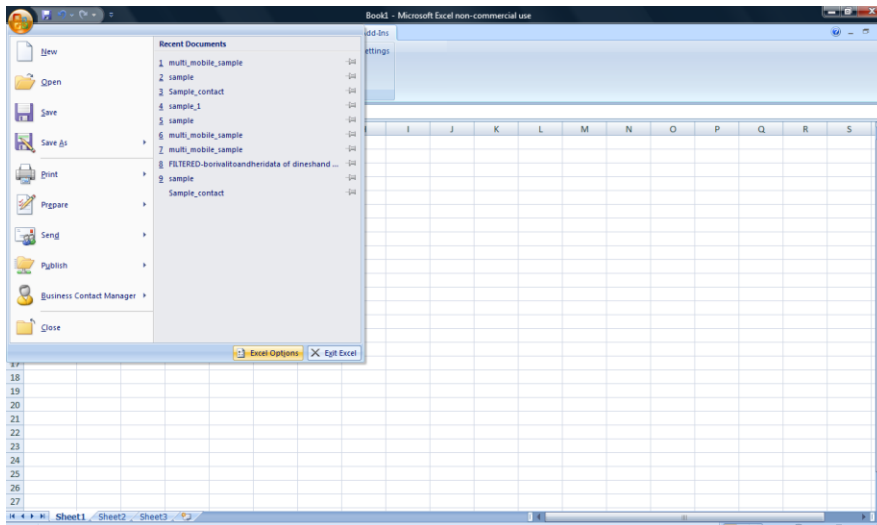


Now, click on Disabled items, and inside the body click on our Excel Plug-in name and Click Enable now. This will enable the feature and you can use the plug-in again.

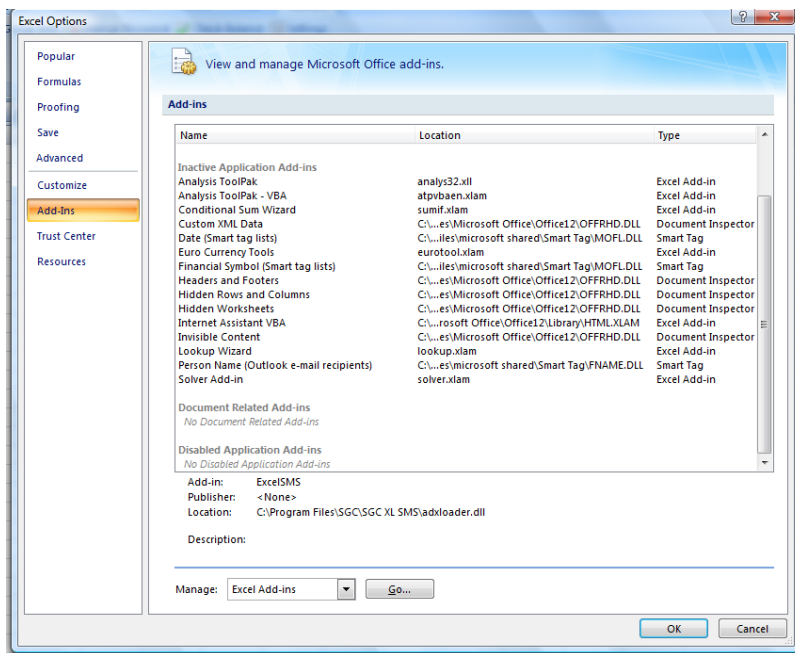


If you are using Excel 2007, then follow the instructions.

Go to Main Menu, Click on Excel Options. (See fig. Below)

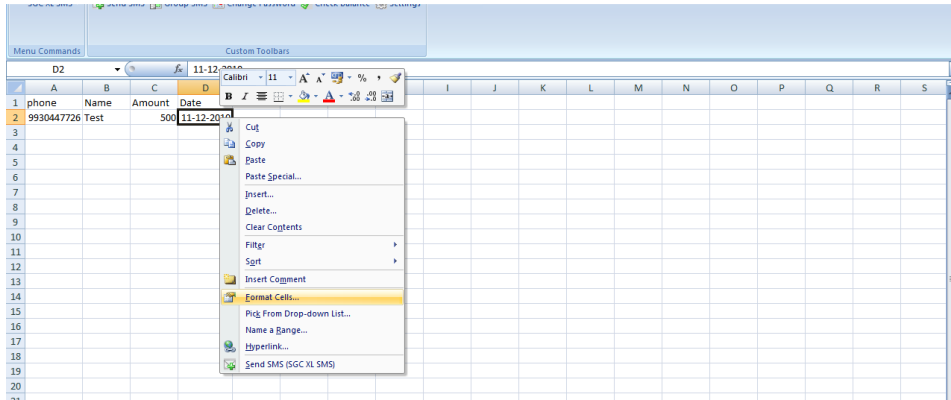


A small window appears, no select Add-in,

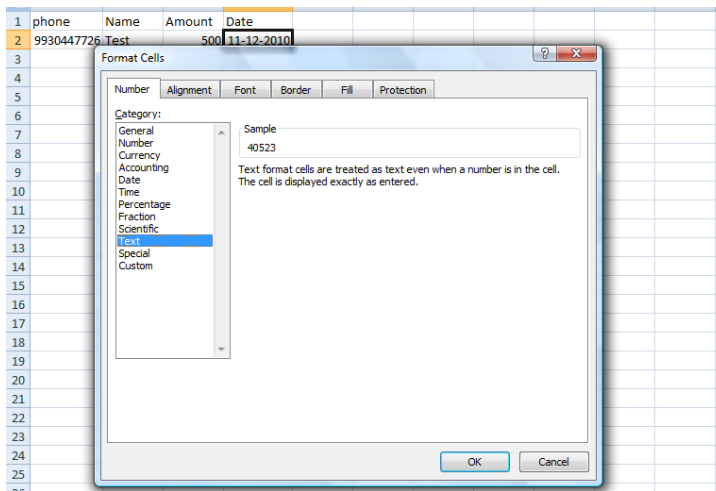


Now search Disabled Application Add-ins and click on SMS plug-in to enable.

2. When I try selecting the date, it's not coming in the date format, it gives me some numbers, and how do I select the exact Date format?
Click on the Date Cell and right click on the selected date cell, now go to Format cells.



A small window appears, now select the category TEXT, click ok.



You are done, now you can send sms in date format.

3. Excel plug-in is not opening at all?

Please check whether you have installed Microsoft .Net Framework as we have given a link on our site. If it is not installed then uninstall our plug-in then install .Net Framework and then install your plug-in. Still you find any errors please contact our Representative personally.